



# The Long View

Gaining Perspective for a Rapidly Changing World

SPEAKER: RYAN SCHULZ

one north A TEKsystems Company



# Ryan Schulz

MANAGING DIRECTOR, CHIEF EXECUTIVE, ONE NORTH





Welcome to The Assembly!





# Why does having a “Long View” matter?





My life right now in 8 slides.















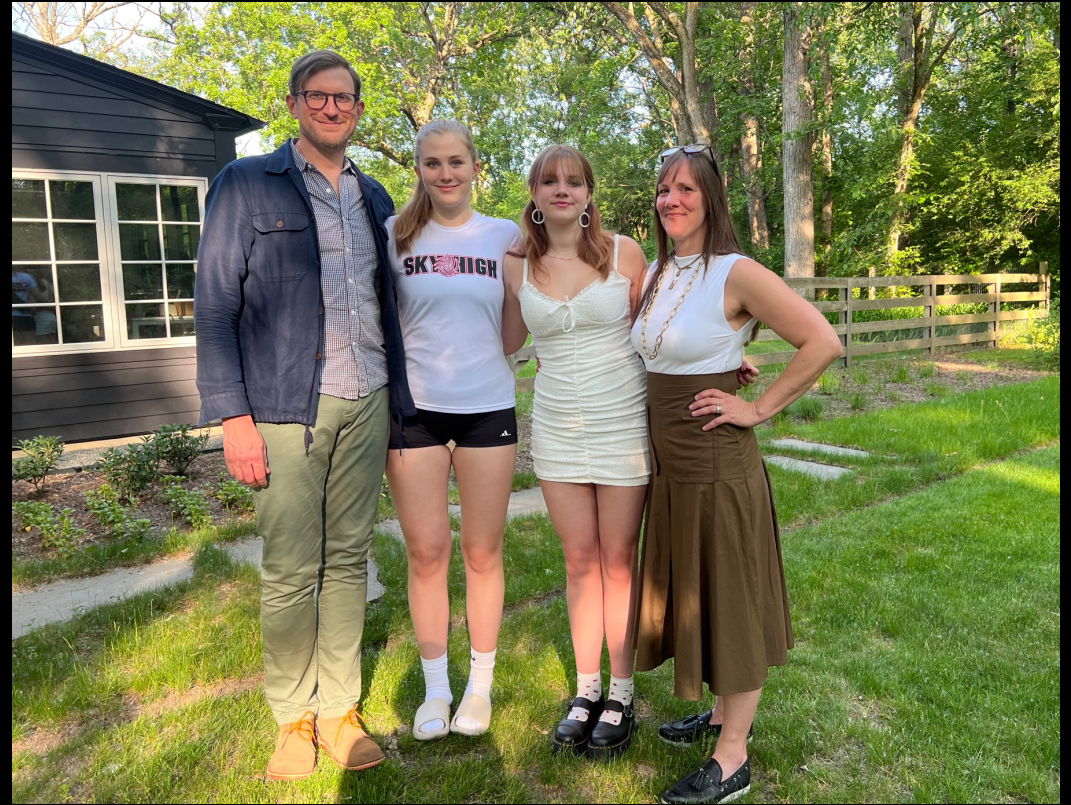


















What about One North?

ONE|NORTH

ONE NORTH

one north  
A TEKsystems Company



Fall in love with the future.



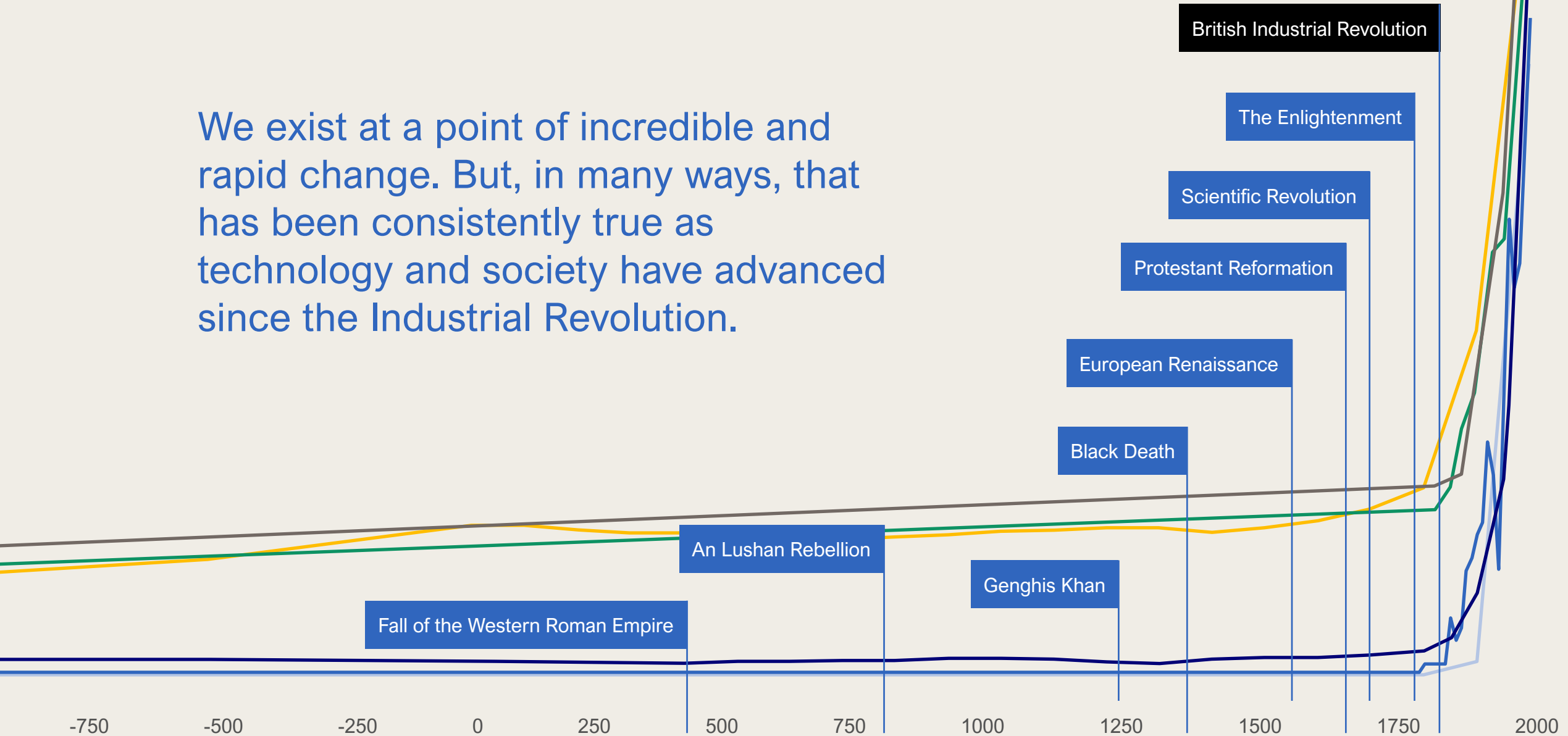
Welcome to Unprecedented Times





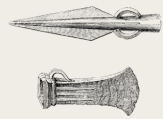
■ Life Expectancy ■ Percent of People Not Living in Extreme Poverty ■ Energy Capture ■ GDP / Cap ■ Percent of People Living in a Democracy ■ War-Making Capacity

We exist at a point of incredible and rapid change. But, in many ways, that has been consistently true as technology and society have advanced since the Industrial Revolution.





# Transforming Material



IRON TOOLS

1250 1500

# Transforming Energy



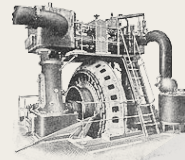
WATER POWER

1800



STEAM POWER

1850



ELECTRIC POWER

1900



COMBUSTION POWER

1950

# Transforming Information



1990

2000

2020

PRESENT



**5000 YEARS  
OF ACCUMULATED  
HUMAN  
KNOWLEDGE AND KNOWHOW**

**CHATGPT**



# WILL A ROBOT STEAL YOUR JOB?

## KILLER COMPUTERS

*Bill Gates warns 'dangerous AI' poses a threat 'like nuclear weapons'*

## AI WARNING:

Robots will destroy a HUGE number of jobs, claims expert

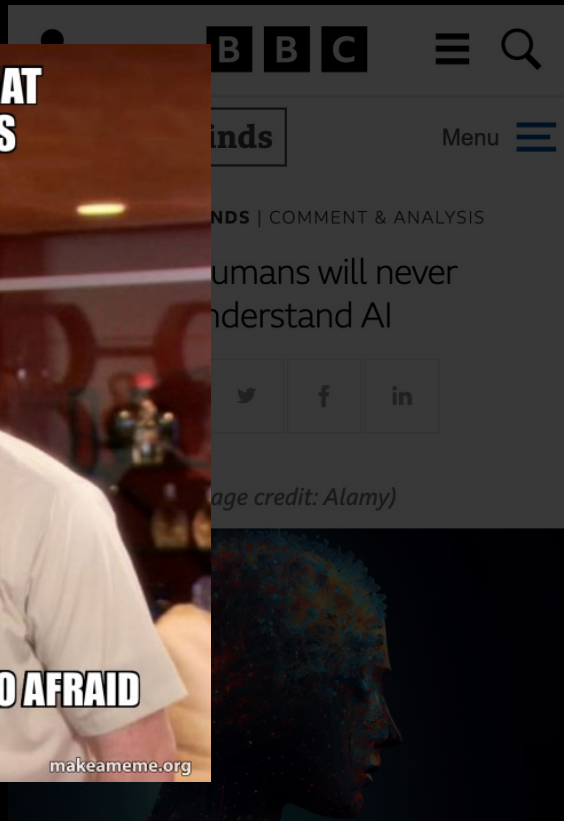
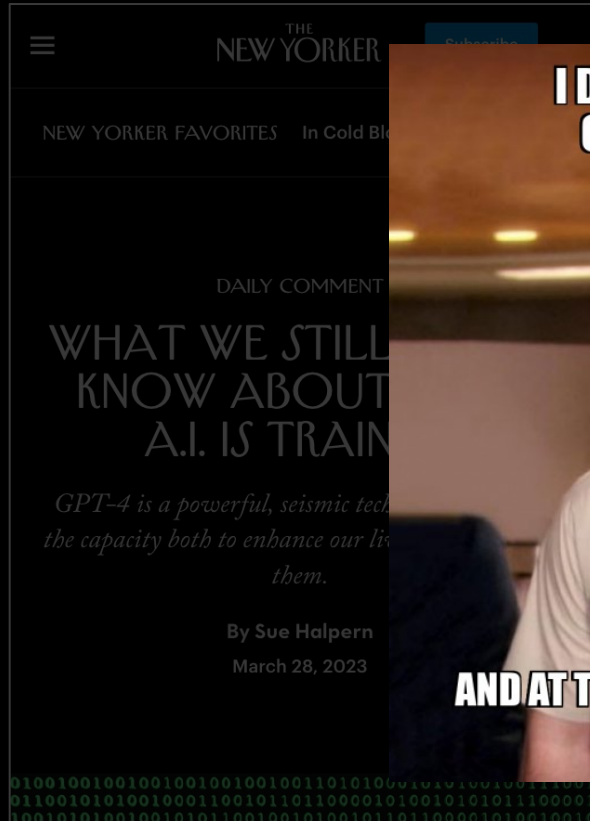
AI could be used to **TAKE OVER** the **WORLD** through 'evil' fake news and hijacking cars





By far, the greatest danger of Artificial Intelligence is that people conclude too early that they understand it.

— Eliezer Yudlowsky







The rate of change is only going increase  
over the next 10 years.





01 PARADIGM

Empirical  
Science

- Observations
- Experimentation

1600s

02 PARADIGM

Theoretical  
Science

- Scientific laws
- Physics, biology, chemistry, etc.

1950s

03 PARADIGM

Computational  
Science

- Simulations
- Molecular dynamics
- Mechanistic models

2000s

04 PARADIGM

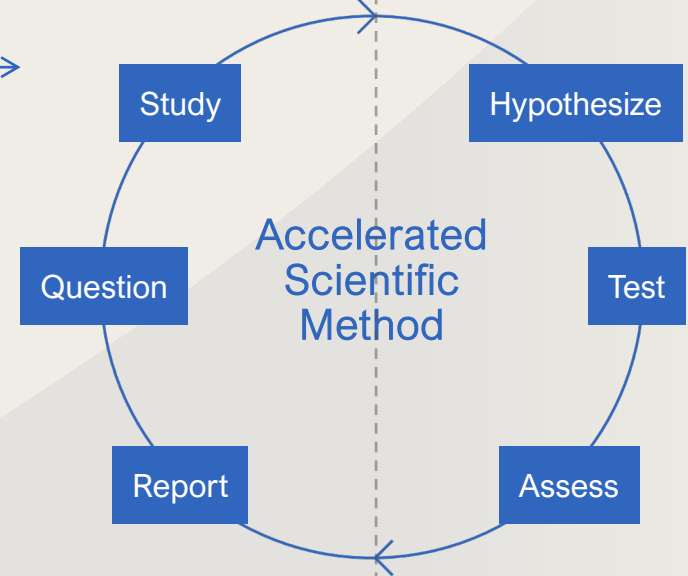
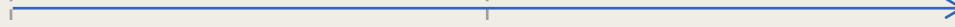
Big Data-Driven  
Science

- Big data, machine learning
- Patterns, anomalies
- Visualization

2020s

Accelerated  
Discovery

Increasing speed, automation, and scale



- Scientific knowledge at scale
- AI generated hypotheses
- Autonomous testing





# What might change?

The scope of what might change is almost as impressive as how it might change.

New  
Technologies

Improved  
Healthcare

Emergent  
Industries

Geo-Political  
Remapping

Education  
Evolution

Research  
& Creative





# Taking the Long View



It's us! —————> .



# Why The Assembly?







Perspective matters.



A large, modern wooden building with a multi-tiered, corrugated metal roof. The building features extensive glass windows and a small balcony. In the foreground, a well-maintained green lawn is dotted with several round tables covered in dark blue cloths, each surrounded by light-colored wooden chairs. The scene is framed by lush green trees and a forested hillside in the background. The text "Perspective matters." is overlaid in white in the center of the image.

Perspective matters.



Collaboration and community  
are key to gaining perspective.

Fall in love with the future.



Big  
Ideas

Big  
Questions





# Thank you.

